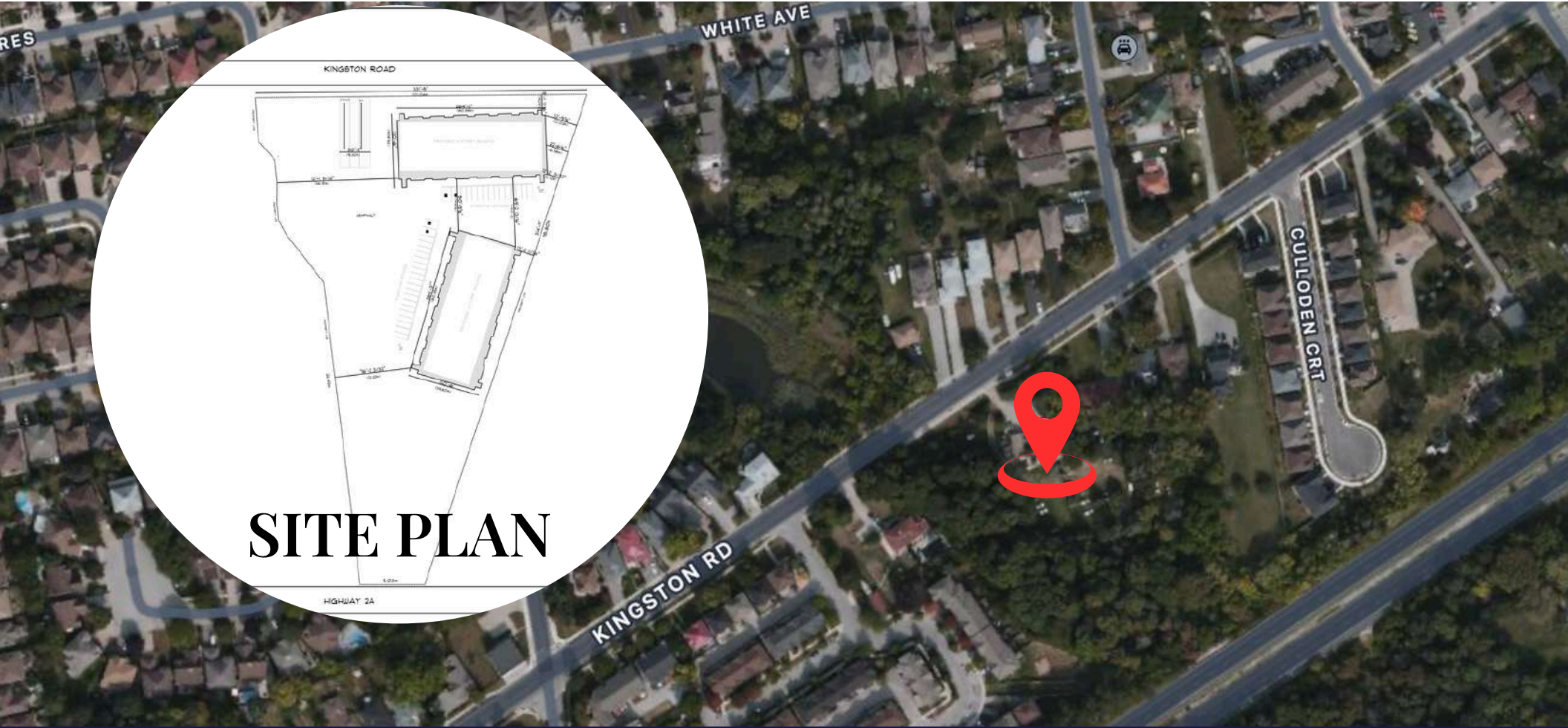


# REDEVELOPMENT OPPORTUNITY

6405 & 6415 Kingston Rd, Centennial Scarborough



**KELLERWILLIAMS**  
**ADVANTAGE REALTY**  
BROKERAGE INDEPENDENTLY OWNED & OPERATED

*Contact Us For  
More Information*

**Sam Park**  
COMMERCIAL DIVISION HEAD  
416-616-7100  
sampark@kw.com



# REDEVELOPMENT OPPORTUNITY

6405 & 6415 Kingston Rd, Centennial Scarborough



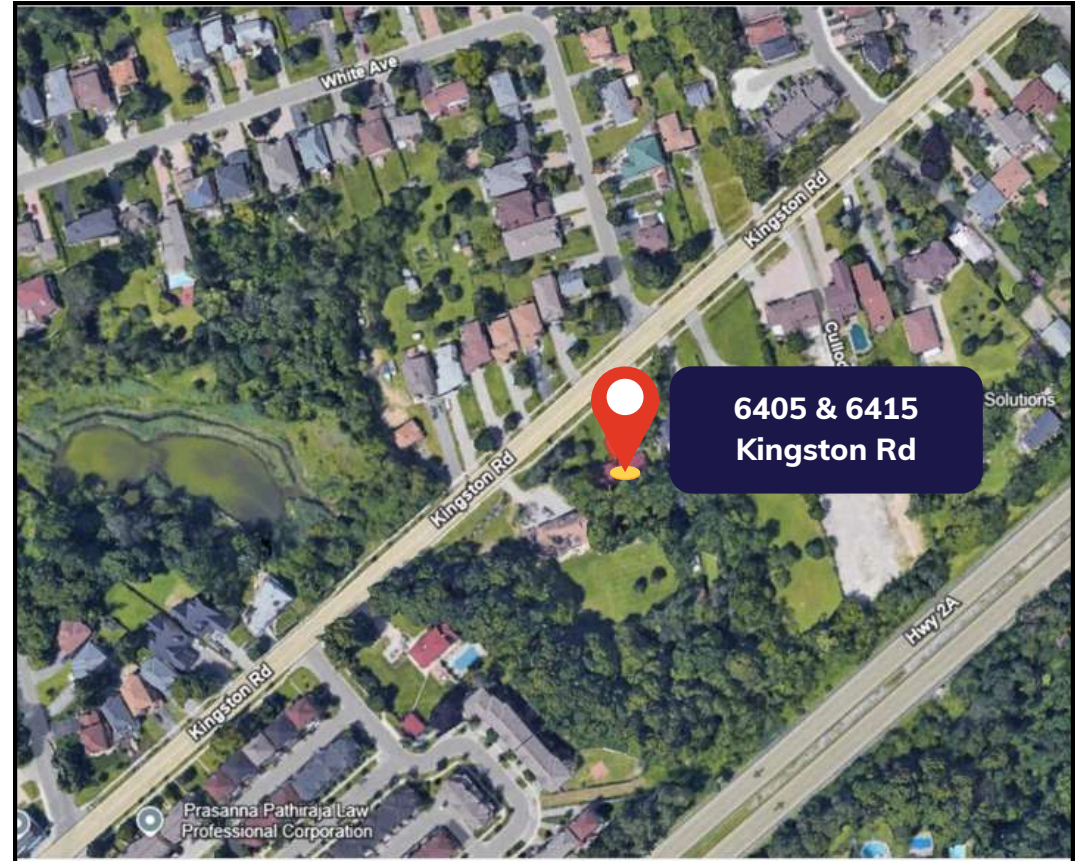
## Property Details

<b>TOTAL AREA:</b>	2.64 A
<b>ZONING:</b>	RD*715
<b>SALE PRICE:</b>	Call for Pricing

## Additional Comments

- Located in a Prime Location Nestled in the Woodbine Corridor, known for its high traffic, connecting Danforth Ave and Woodbine Beach.
- A few steps away from Woodbine Subway Station, and a short distance from Danforth GO Station, ensuring easy access and high visibility.
- Serviced for hydro & gas.
- Architectural drawings for retirement home for over 300 suites.
- Appraisal completed in 2018.

## Nearby Transit Routes



# REDEVELOPMENT OPPORTUNITY

6405 & 6415 Kingston Rd, Centennial Scarborough



## Front Elevation - 4 Storey - Building A



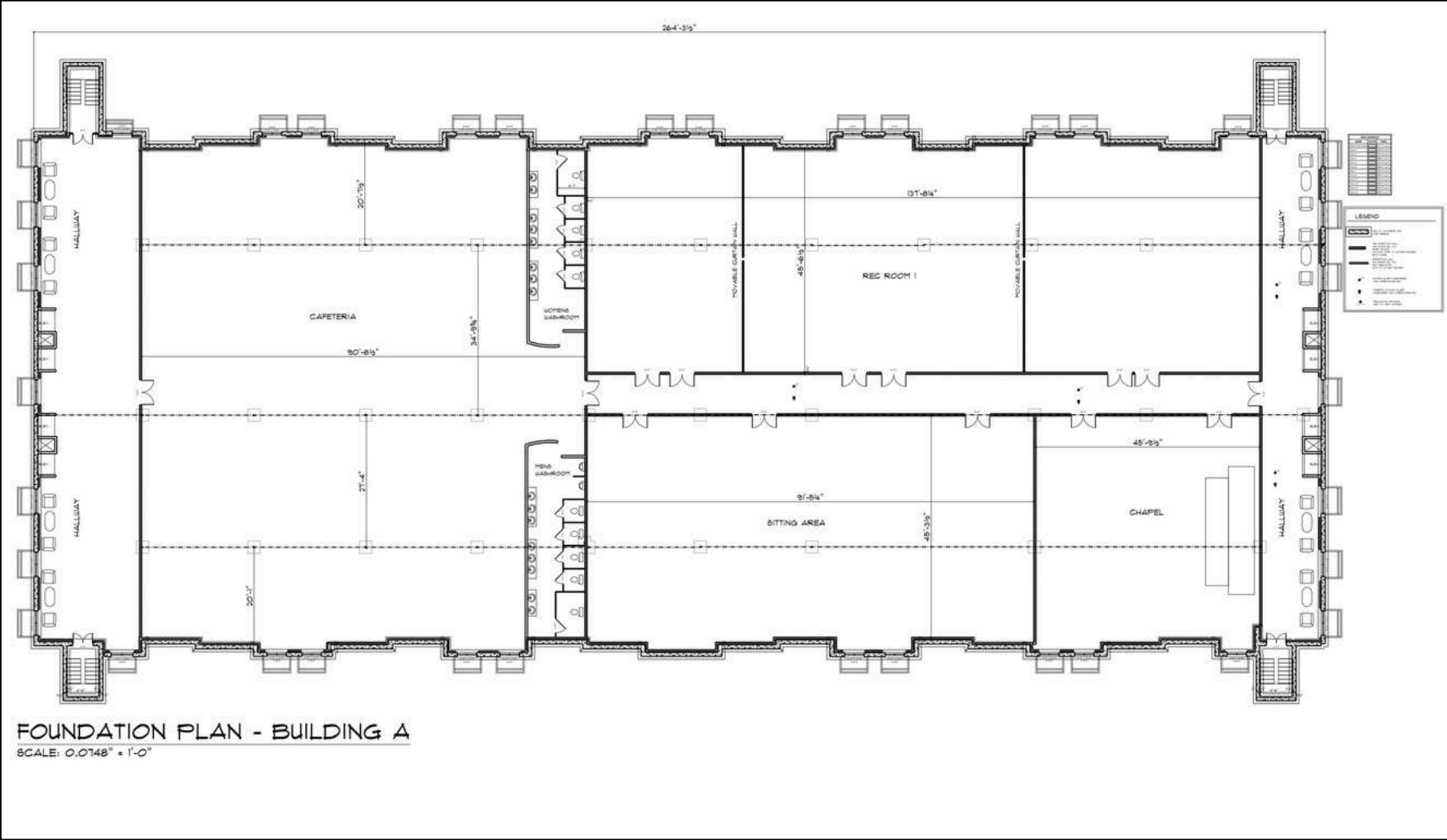


# REDEVELOPMENT OPPORTUNITY

6405 & 6415 Kingston Rd, Centennial Scarborough



## Foundation Plan - Building A



# REDEVELOPMENT OPPORTUNITY

6405 & 6415 Kingston Rd, Centennial Scarborough



## Floor Plan - Building A

